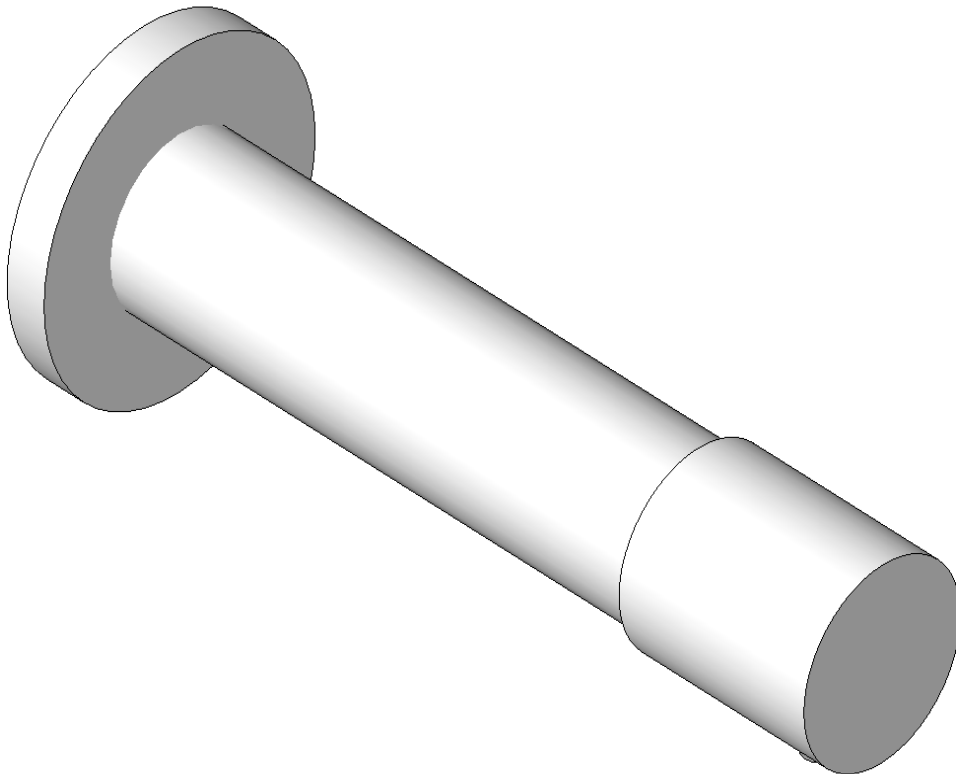




DOLPHIN SOLUTIONS LIMITED

DOLPHIN WALL MOUNTED SOAP DISPENSER

BC1032



Family Types

Name: BC1032 Dolphin Wall Mounted Soap Dispenser

Parameter	Value
Dimensions	
Width	Body = Ø25.4mm Rosette = Ø44mm
Recommended Minimum Distance	Behind soap unit = 108mm to allow for connections to soap feeds.
Projection	120mm
Panel Hole Diameter	Ø19mm
Maximum Panel Thickness	55mm
General	
Product Page Link	http://www.dolphinsolutions.co.uk/en/product/
Product Data	Superior quality and timeless design for prestigious washrooms. Designed for heavy traffic prestigious envi
Identity Data	
URL	www.dolphinsolutions.co.uk
Type Comments	
Tel No.	+44 (0) 1424 202224
Model	BC1032
Manufacturer	Dolphin Solutions Limited
Fax No.	+44 (0) 1424 205200
Email	info@dolphinsolutions.co.uk
Description	Wall mounted soap dispenser
Assembly Code	D2090900
Address	Southpoint, Compass Park, Bodiarn, Robertbridge, TN32 5BS
Keynote	
Cost	

Family Types: New... Rename... Delete

Parameters: Add... Modify... Remove

Lookup Tables: Manage...

OK Cancel Apply Help